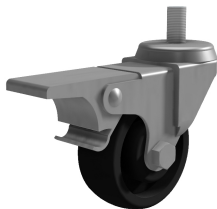


WHEEL GREY RUBBER / PA Ø50 M8x15 GF

J2362	WHEEL GREY RUBBER / PA Ø50 M8x15 GF
MATERIAL	galvanized steel support - PP hub - non-marking thermoplastic rubber
COMMERCIAL INFO	A2 stainless steel support in pack of 12 pcs on demand
USAGE NOTES	Q = (n-1)/n, with "Q" = maximum flow rate and "n" = nr. wheels nominal static load 350 N - not suitable with organic solvents, chlorinated, hydrocarbons and mineral oils

